

ᠮᠤᠩᠭᠣᠳᠠᠯᠠᠳᠤᠨ ᠵᠢᠨᠠᠳᠤᠨ ᠵᠢᠨᠠᠳᠤᠨ ᠵᠢᠨᠠᠳᠤᠨ ᠵᠢᠨᠠᠳᠤᠨ ᠵᠢᠨᠠᠳᠤᠨ ᠵᠢᠨᠠᠳᠤᠨ ᠵᠢᠨᠠᠳᠤᠨ
内蒙古达拉特经济开发区管理委员会

达开管函〔2021〕273号

内蒙古达拉特经济开发区管理委员会关于
转报开展区域文物影响评估的函

达拉特旗文化和旅游局：

为优化开发区营商环境，按照《鄂尔多斯市人民政府关于印发深化营商环境综合改革实施方案的通知》（鄂府发〔2019〕47号）、《鄂尔多斯市人民政府关于印发鄂尔多斯市工程建设项目审批制度改革实施方案的通知》（鄂府发〔2019〕72号）、《鄂尔多斯市工程建设项目审批制度改革领导小组办公室关于开展“一站式”审批服务区域评估和中心城区“标准地”试点工作的通知》（鄂工改办发〔2019〕18号）要求，达拉特经济开发区结合园区实际，拟对达拉特物流园区块（约6.4平方公里）开展文物影响评估，方便新入园项目共享区域性评估结果，减少了新入园项目前期手续的办理时间和成本。如无不妥，请转报鄂尔多斯市文化和旅游局。

附件：1. 达拉特物流园区四至界限图（地块一）

2. 达拉特物流园区四至界限图（地块二）
3. 界址点成果表

内蒙古达拉特经济开发区管理委员会

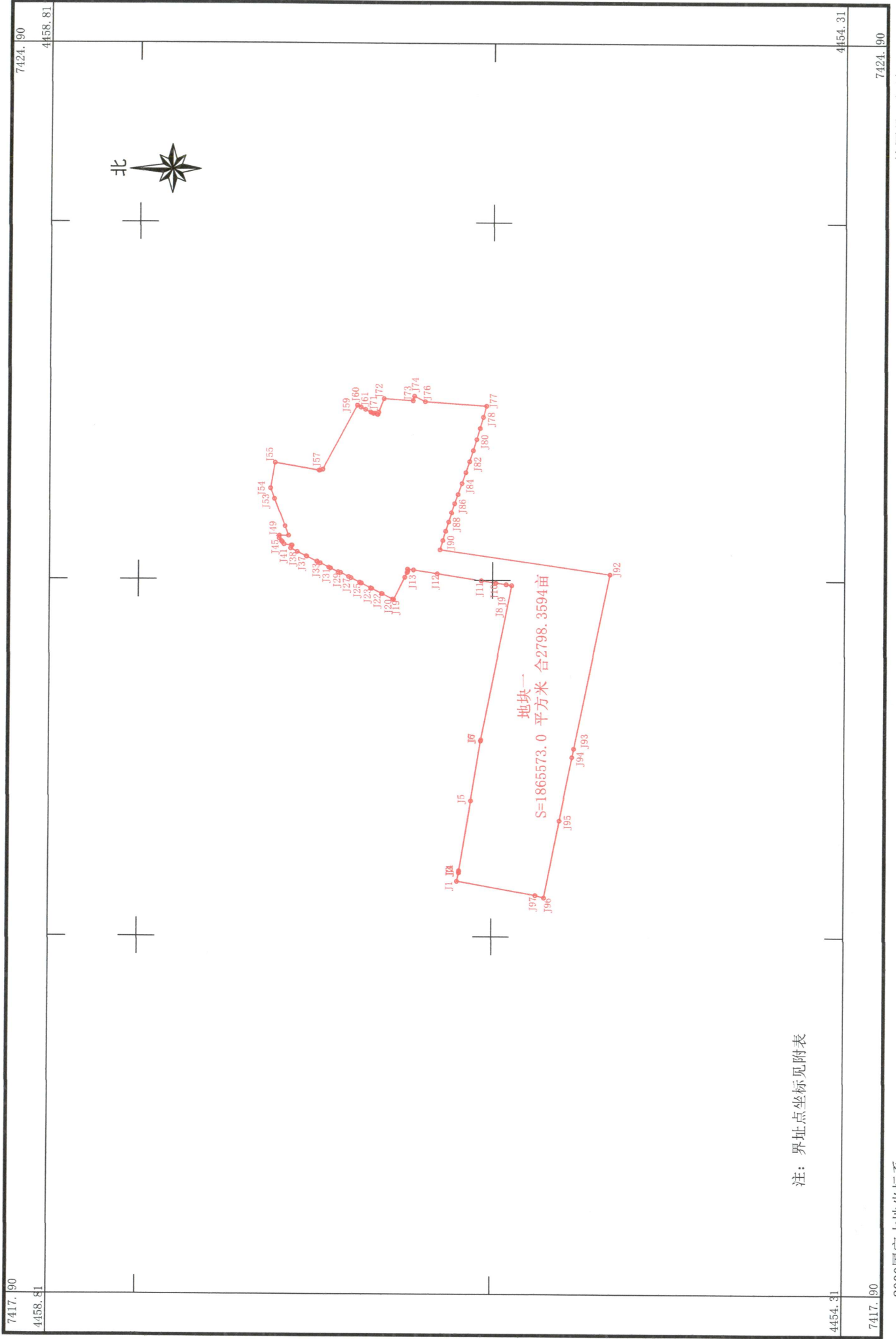
2021年12月28日



达拉特物流园区四至界限图



达拉特物流园区四至界限图

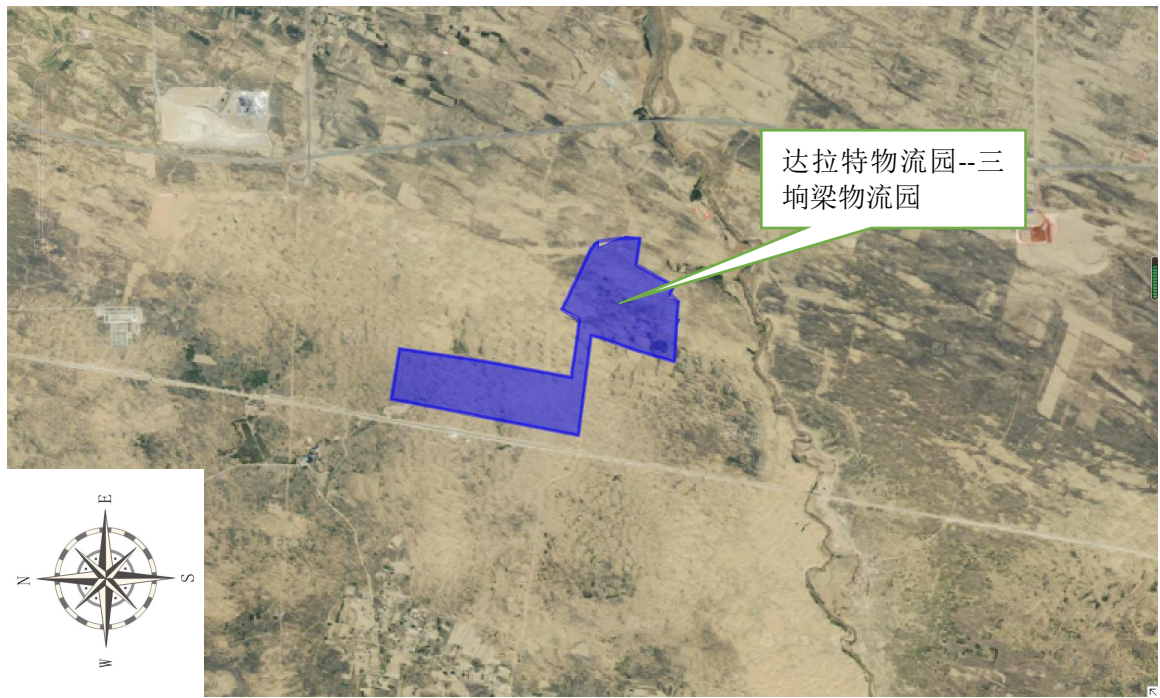




达拉特物流园区位图



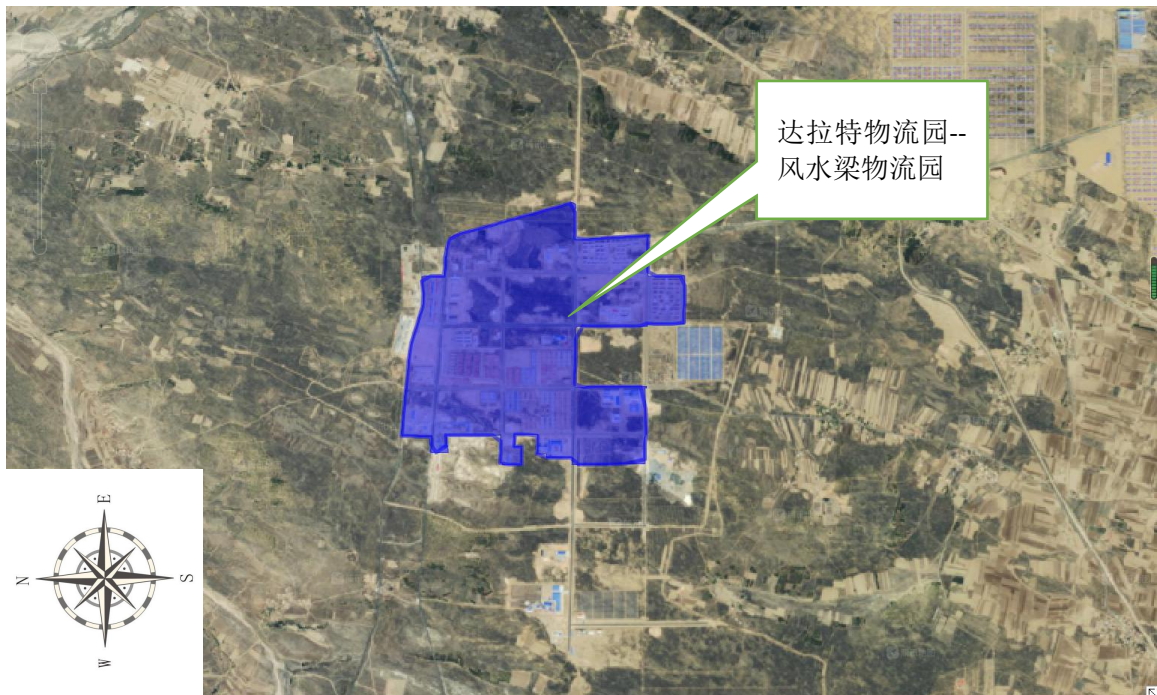
三峁梁物流园选址范围图



三峁梁物流园选址范围卫星图



风水梁物流园选址范围图



风水梁物流园选址范围卫星图

附件: 达拉特物流园选址范围坐标表 (2000 坐标)
三垧梁物流园选址坐标表

点号	平面坐标 X	平面坐标 Y
1	4456499.4988	37420213.8012
2	4456488.4252	37420260.8084
3	4456488.6368	37420267.1683
4	4456488.1836	37420273.5155
5	4456424.1445	37420664.8144
6	4456369.0708	37421001.3318
7	4456367.8941	37421007.2853
8	4456196.4903	37421874.4312
9	4456227.7097	37421879.2141
10	4456286.3548	37421888.1988
11	4456368.2878	37421900.7513
12	4456617.8640	37421938.9875
13	4456751.8172	37421959.5097
14	4456785.1883	37421964.6223
15	4456785.7733	37421963.4435
16	4456784.2834	37421952.2745
17	4456787.9847	37421944.7904
18	4456800.9991	37421918.4754
19	4456801.0201	37421918.4329
19	4456862.9255	37421793.2610
20	4456868.7711	37421796.1967

21	4456927.7627	37421825.7243
22	4456931.1896	37421827.4395
23	4456986.7543	37421855.2518
24	4456993.6081	37421858.6824
25	4457045.7459	37421884.7793
26	4457056.0266	37421889.9252
27	4457104.7375	37421914.3069
28	4457118.4450	37421921.1680
29	4457163.7292	37421943.8344
30	4457177.1417	37421947.4163
31	4457220.7477	37421968.6744
32	4457230.0583	37421973.2133
33	4457277.7391	37421997.0537
34	4457296.8659	37422006.6169
35	4457297.4688	37422005.1271
36	4457354.6821	37422033.4226
37	4457358.1400	37422035.1327
38	4457408.7277	37422060.1514
39	4457446.7679	37422078.9646
39	4457446.7736	37422078.9679
40	4457438.7916	37422095.1074
41	4457438.5064	37422095.6840
42	4457438.8197	37422095.6864
43	4457442.7662	37422095.7163
44	4457483.5055	37422101.9577
45	4457493.5802	37422114.3858

46	4457498.5133	37422120.4713
47	4457511.4688	37422136.4532
48	4457510.6251	37422148.8585
49	4457510.5188	37422150.4216
50	4457509.7038	37422150.4283
51	4457458.5416	37422150.8546
52	4457478.6420	37422203.3507
53	4457537.3684	37422356.7260
54	4457559.9788	37422415.7772
55	4457535.2378	37422559.2792
56	4457286.5878	37422516.3732
57	4457280.1403	37422518.1173
58	4457265.2046	37422522.1577
59	4457073.0501	37422881.4758
60	4457072.6987	37422882.2304
61	4457052.2438	37422871.4572
62	4457026.8071	37422858.8775
63	4456997.4873	37422844.3775
64	4456989.2065	37422840.2823
65	4456982.4845	37422836.9580
66	4456981.6419	37422836.5413
67	4456974.2942	37422838.0618
67	4456974.2889	37422838.0588
68	4456960.2811	37422832.0326
69	4456958.4588	37422831.2486
70	4456957.2276	37422830.7190

71	4456952.4264	37422842.8753
72	4456922.1484	37422919.5375
73	4456758.1326	37422908.3003
74	4456750.7315	37422933.8589
74	4456750.7258	37422933.8556
75	4456750.5557	37422934.3559
76	4456689.5509	37422903.6016
77	4456343.1348	37422879.8677
78	4456360.5040	37422817.1929
79	4456378.5422	37422754.7074
80	4456397.2474	37422692.4183
81	4456416.6174	37422630.3327
82	4456436.6500	37422568.4577
83	4456457.3429	37422506.8004
84	4456478.6938	37422445.3679
85	4456500.7002	37422384.1671
86	4456519.3087	37422332.8970
87	4456537.2609	37422281.3933
88	4456554.5538	37422229.6646
89	4456571.1846	37422177.7193
90	4456587.1507	37422125.5658
91	4456602.4493	37422073.2126
92	4455641.6786	37421937.7583
93	4455842.5056	37420958.0727
94	4455852.2231	37420910.6681
95	4455922.7489	37420554.5735

96	4456007.9337	37420122.3448
97	4456056.3916	37420135.4682
1	4456499.4988	37420213.8012

风水梁物流园选址坐标表

点号	平面坐标 X	平面坐标 Y
1	4445982.7654	37437922.6997
2	4445994.9363	37437935.9289
3	4446006.0488	37437952.3330
4	4446014.7801	37437975.6165
5	4446026.6863	37438021.3895
6	4446040.9739	37438071.6604
7	4446056.8489	37438135.4251
8	4446070.0781	37438187.1512
9	4446083.3073	37438238.8774
10	4446098.3885	37438292.5879
11	4446107.6490	37438327.9099
12	4446116.9094	37438363.2318
13	4446124.8469	37438394.7173
14	4446135.6949	37438425.9382
15	4446136.3050	37438428.3212
16	4446135.5018	37438444.6574
17	4446143.6511	37438457.0103
18	4446149.4849	37438479.7937
19	4446152.0784	37438489.9225
19	4446152.1109	37438490.0497

20	4446155.2741	37438502.4029
21	4446164.0054	37438536.4020
22	4446172.7366	37438570.4010
23	4446177.2795	37438587.9236
24	4446183.8491	37438613.2636
25	4446190.1992	37438640.2511
26	4446197.8721	37438661.1533
27	4446200.5179	37438676.4991
28	4446203.6929	37438698.1950
29	4446213.0625	37438731.4142
30	4446218.2450	37438749.7889
31	4446234.3847	37438800.3243
32	4446240.9993	37438829.4286
33	4446251.4468	37438860.9801
34	4446254.2285	37438869.3808
35	4446258.7264	37438891.0766
36	4446267.9868	37438927.3246
37	4446270.8972	37438942.6705
38	4446276.7181	37438961.7205
39	4446282.5389	37438977.0663
39	4446284.9202	37438993.7352
40	4446291.0056	37439011.1977
41	4446292.2234	37439015.7982
42	4446294.1638	37439023.1287
43	4446302.9119	37439056.1770
44	4446311.6432	37439082.3708

45	4446315.3473	37439092.4250
46	4446315.3473	37439101.4208
47	4446313.4952	37439110.9458
48	4446307.9390	37439122.3229
49	4446301.1614	37439134.9523
50	4446300.8220	37439135.5847
51	4446296.9371	37439142.8238
52	4446293.4014	37439142.1645
53	4446291.4352	37439141.7979
54	4446272.9295	37439137.4397
55	4446265.2225	37439137.3296
56	4446262.0301	37439137.2840
57	4446249.4533	37439137.1044
58	4446221.2900	37439136.6710
59	4446201.7043	37439136.3698
60	4446157.4092	37439135.6882
61	4446141.9819	37439135.4509
62	4446121.0651	37439134.9317
63	4446084.9171	37439134.0345
64	4446048.7690	37439133.1371
65	4445991.4804	37439130.2291
66	4445990.4554	37439130.1771
67	4445983.5502	37439129.8265
67	4445965.8774	37439130.1562
68	4445963.6674	37439130.2704
69	4445959.3364	37439131.4872

70	4445957.3856	37439132.0353
71	4445957.7286	37439138.8963
72	4445957.2441	37439139.1544
73	4445956.6319	37439139.4806
74	4445955.6668	37439139.9948
74	4445961.6994	37439260.6618
75	4445963.4479	37439284.8740
76	4445964.6681	37439301.6238
77	4445968.0862	37439361.2012
78	4445968.5450	37439369.2811
79	4445968.6468	37439371.0732
80	4445970.0225	37439395.2977
81	4445970.2936	37439400.0719
82	4445970.3375	37439400.8461
83	4445972.6244	37439441.1167
84	4445973.1597	37439450.5433
85	4445974.9813	37439482.6221
86	4445975.6571	37439494.5222
87	4445975.9900	37439500.3844
88	4445979.6108	37439567.9465
89	4445980.9325	37439595.3257
90	4445982.2931	37439623.5092
91	4445982.3723	37439625.1490
92	4445986.3007	37439706.5225
93	4445986.5574	37439711.8416
94	4445993.2877	37439847.2415

95	4445983.0484	37439844.0373
96	4445979.0775	37439842.5401
97	4445978.8455	37439842.4526
98	4445977.0082	37439841.7598
99	4445971.8420	37439841.1858
100	4445969.8645	37439840.9660
101	4445943.1895	37439840.2219
102	4445911.8275	37439839.3470
103	4445875.3212	37439838.3285
104	4445846.5684	37439837.5265
105	4445837.5828	37439837.4301
106	4445835.0771	37439837.4033
107	4445815.0056	37439837.1881
108	4445783.6603	37439836.8521
109	4445745.1592	37439836.4394
110	4445711.0148	37439836.0734
111	4445673.7951	37439835.6744
112	4445641.5693	37439835.5080
113	4445598.0772	37439835.2835
114	4445597.8809	37439849.0146
115	4445596.9122	37439916.7841
116	4445595.9435	37439984.5538
117	4445596.2120	37440038.9117
118	4445596.4806	37440093.2696
119	4445596.7491	37440147.6276
120	4445596.8262	37440152.2362

121	4445597.3746	37440185.0216
122	4445588.9962	37440194.8894
123	4445575.2687	37440195.6464
124	4445548.2811	37440195.4877
125	4445532.8824	37440193.5827
126	4445501.9260	37440192.3127
127	4445460.1747	37440192.6302
128	4445426.0434	37440191.6777
129	4445404.7709	37440190.2490
130	4445376.9895	37440189.1377
131	4445324.6019	37440188.3440
132	4445272.2143	37440186.2802
133	4445235.1461	37440186.1214
134	4445198.0779	37440185.9627
135	4445191.8867	37440184.3752
136	4445174.4241	37440183.4227
137	4445143.9441	37440184.2164
138	4445134.5778	37440184.2164
139	4445130.3693	37440182.4826
140	4445126.6716	37440180.9592
141	4445126.6703	37440179.8434
142	4445126.6075	37440122.9470
143	4445126.8341	37440071.7163
144	4445127.0932	37440021.8041
145	4445127.1851	37440004.0930
146	4445127.4650	37439950.1714

147	4445127.7449	37439896.2497
148	4445128.0247	37439842.3281
149	4445128.0248	37439842.3220
150	4445128.8185	37439835.9720
151	4445136.3781	37439828.3690
152	4445114.5708	37439828.1192
153	4445112.0022	37439828.0659
154	4445111.6185	37439806.6570
155	4445111.3714	37439792.8726
156	4445112.1122	37439748.6342
157	4445112.8531	37439704.3958
158	4445112.8531	37439655.4302
159	4445112.8531	37439606.4645
160	4445112.8531	37439557.4989
161	4445113.2059	37439502.4654
162	4445113.5586	37439447.4320
163	4445113.9114	37439392.3985
164	4445113.4881	37439323.2892
165	4445113.0648	37439254.1799
166	4445112.6414	37439198.6173
167	4445112.2181	37439143.0547
168	4445110.7364	37439138.6097
169	4445109.2558	37439134.6470
170	4445104.1295	37439134.6133
171	4445100.6256	37439134.5902
172	4445046.4420	37439133.1979

173	4444994.1532	37439131.8543
174	4444946.1747	37439130.6214
175	4444887.6766	37439129.1416
176	4444834.0657	37439127.7854
177	4444781.7936	37439126.4630
178	4444723.9243	37439124.9991
179	4444661.4150	37439123.8938
180	4444609.1877	37439122.9703
181	4444555.5828	37439122.0225
182	4444527.9415	37439121.5094
183	4444527.9369	37439166.4271
184	4444527.9329	37439206.1147
185	4444527.9288	37439246.5959
186	4444527.9245	37439289.1102
187	4444527.6003	37439325.9730
188	4444527.3281	37439356.9339
189	4444526.8780	37439408.1200
190	4444526.4660	37439454.9617
191	4444526.0724	37439499.7190
192	4444525.7441	37439543.4646
193	4444525.3600	37439594.6587
194	4444525.0141	37439640.7423
195	4444525.1182	37439672.4433
196	4444525.2341	37439707.7635
197	4444525.3839	37439753.4038
198	4444525.5156	37439793.5370

199	4444525.5890	37439815.8981
200	4444509.4419	37439815.5631
201	4444509.5300	37439792.8856
202	4444500.1595	37439798.9634
203	4444495.1324	37439800.0217
204	4444483.2503	37439800.5309
205	4444471.1803	37439800.6956
206	4444305.2159	37439802.9608
207	4444057.6815	37439806.3394
208	4444057.5703	37439793.9072
209	4444054.2521	37439793.8806
210	4444047.2508	37439793.8246
211	4444028.0091	37439793.8104
212	4444005.2261	37439793.7936
213	4443980.3554	37439794.1105
214	4443940.7284	37439793.2398
215	4443938.5308	37439793.1680
216	4443900.2004	37439791.9154
217	4443860.0425	37439791.7829
218	4443819.7233	37439791.6511
219	4443798.0887	37439790.1741
220	4443792.2418	37439789.7749
221	4443776.8170	37439789.5074
222	4443775.7723	37439600.7479
223	4443774.4063	37439353.9364
224	4443775.1380	37439153.9377

225	4443775.1537	37439152.2052
226	4443775.2379	37439129.1926
227	4443775.2796	37439117.7982
228	4443775.4662	37439117.8014
229	4443775.5487	37439108.7169
230	4443775.7508	37439086.4702
231	4443838.2718	37439087.5886
232	4443837.6519	37439071.6598
233	4443838.6087	37439013.7305
234	4443839.5655	37438955.8012
235	4443840.5223	37438897.8718
236	4443841.4791	37438839.9426
237	4443881.6958	37438839.6780
238	4443882.2251	37438792.5821
239	4443882.7542	37438745.4861
240	4443930.9085	37438746.8091
241	4443979.0627	37438748.1320
242	4444027.2170	37438749.4549
243	4444046.0617	37438750.1514
244	4444055.0522	37438750.4837
245	4444068.9217	37438750.9963
246	4444069.0849	37438720.6424
247	4444069.4377	37438655.0257
248	4444069.7905	37438589.4089
249	4444069.5259	37438532.3469
250	4444069.5225	37438531.6044

251	4444055.5824	37438530.9249
252	4444048.0010	37438530.5553
253	4444003.2814	37438527.8987
254	4443958.5619	37438525.2421
255	4443957.2390	37438561.6224
256	4443955.9160	37438598.0027
257	4443914.6669	37438597.8476
258	4443873.4177	37438597.6925
259	4443826.6928	37438597.5169
260	4443779.9677	37438597.3412
261	4443780.6292	37438533.4001
262	4443781.2907	37438469.4590
263	4443781.9521	37438405.5179
264	4443798.0260	37438406.5278
265	4443798.4394	37438386.3532
266	4443852.1278	37438387.2352
267	4443905.8163	37438388.1171
268	4443959.5048	37438388.9990
269	4444005.9928	37438389.6785
270	4444052.4807	37438390.3578
271	4444055.1002	37438390.3961
272	4444073.1179	37438390.6594
273	4444070.7805	37438387.3329
274	4444069.5105	37438385.2163
275	4444068.4521	37438380.5596
276	4444068.4704	37438374.0572

277	4444068.6411	37438313.3402
278	4444068.8119	37438252.6232
279	4444068.9826	37438191.9063
280	4444069.0297	37438175.1606
281	4444069.1366	37438113.0685
282	4444069.1802	37438113.0694
283	4444069.2815	37438044.6952
284	4444069.3734	37437982.6124
285	4444069.3827	37437976.3210
286	4444069.4476	37437932.5359
287	4444069.4478	37437932.4046
288	4444069.4480	37437932.2701
289	4444069.4480	37437932.2513
290	4444069.4594	37437924.5541
291	4444069.4840	37437907.9467
292	4444068.8291	37437863.2268
293	4444058.0910	37437863.8476
294	4444012.6877	37437864.3442
295	4443967.2843	37437864.8408
296	4443967.6150	37437877.0778
297	4443901.7998	37437877.4085
298	4443902.2297	37437838.4485
299	4443902.6597	37437799.4886
300	4443905.1733	37437765.4896
301	4443907.4032	37437721.7806
302	4443909.9877	37437703.8376

303	4443921.0252	37437705.5922
304	4443945.3905	37437709.4658
305	4443968.3530	37437713.1163
306	4443988.3984	37437716.3030
307	4444014.0967	37437718.6801
308	4444044.1507	37437721.4601
309	4444054.2674	37437712.3912
310	4444057.2876	37437663.9160
311	4444060.3076	37437615.4407
312	4444063.1189	37437558.5552
313	4444065.9301	37437501.6697
314	4444067.2530	37437438.8309
315	4444068.5839	37437425.7426
316	4444079.9683	37437426.9409
317	4444079.9601	37437427.1629
318	4444092.2740	37437428.4591
319	4444094.5272	37437428.6963
320	4444117.3626	37437430.8772
321	4444141.0163	37437433.3670
322	4444158.9033	37437434.8447
323	4444158.9093	37437434.8452
324	4444191.9165	37437437.5719
325	4444232.2977	37437440.9077
326	4444275.3817	37437446.4491
327	4444316.1622	37437451.6941
328	4444318.4658	37437451.9904

329	4444334.9856	37437454.1151
330	4444355.7261	37437456.7827
331	4444397.5552	37437460.8189
332	4444400.9699	37437461.1484
333	4444436.8872	37437464.3233
334	4444472.8044	37437467.4984
335	4444495.9781	37437470.4594
336	4444504.0766	37437471.4943
337	4444505.8830	37437473.4944
338	4444507.4957	37437476.1410
339	4444507.5218	37437472.2049
340	4444534.5479	37437475.6583
341	4444534.5492	37437475.3880
342	4444544.2421	37437476.6265
343	4444601.6531	37437483.0271
344	4444661.7173	37437489.7234
345	4444671.8454	37437490.6907
346	4444694.0455	37437492.8110
347	4444697.0393	37437493.0969
348	4444732.3615	37437496.4704
349	4444783.2274	37437501.4974
350	4444788.5615	37437502.0246
351	4444834.0937	37437506.5245
352	4444839.2416	37437507.2186
353	4444881.1896	37437512.8745
354	4444929.8730	37437522.3995

355	4444969.5606	37437531.3954
356	4445015.0691	37437544.6246
357	4445064.8108	37437562.6163
358	4445125.6651	37437581.6663
359	4445126.0535	37437581.7803
360	4445130.3322	37437583.0360
361	4445148.7535	37437588.4423
362	4445174.3485	37437595.9539
363	4445230.4403	37437616.0622
364	4445280.1821	37437632.4664
365	4445316.1655	37437644.6372
366	4445347.3864	37437652.5748
367	4445384.9573	37437652.0456
368	4445453.7491	37437648.3414
369	4445508.5180	37437644.9019
370	4445563.2868	37437641.4623
371	4445607.0457	37437639.7370
372	4445612.4734	37437646.8788
373	4445620.4110	37437665.3997
374	4445619.6172	37437728.8998
375	4445618.8235	37437792.3999
376	4445616.5337	37437849.0680
377	4445616.4933	37437849.6893
378	4445615.7934	37437860.4685
379	4445638.2155	37437861.1676
380	4445706.7912	37437863.3058

381	4445767.5132	37437866.4808
382	4445800.7715	37437864.5108
383	4445801.2688	37437864.4814
384	4445805.4810	37437864.2318
385	4445806.5617	37437869.8109
386	4445808.0282	37437877.3821
387	4445811.8442	37437879.7313
388	4445849.9443	37437881.4775
389	4445875.4748	37437884.2973
390	4445885.3985	37437885.3933
391	4445915.5611	37437889.0975
392	4445917.8140	37437889.6146
393	4445931.7007	37437892.8017
394	4445944.9299	37437899.4163
395	4445960.0112	37437905.2371
396	4445971.9174	37437912.9101
397	4445981.2502	37437921.3324
1	4445982.7654	37437922.6997